

# *You Belong in Our Dreamhouse*

*PANHELLENIC RECRUITMENT GUIDE - FALL 2024*

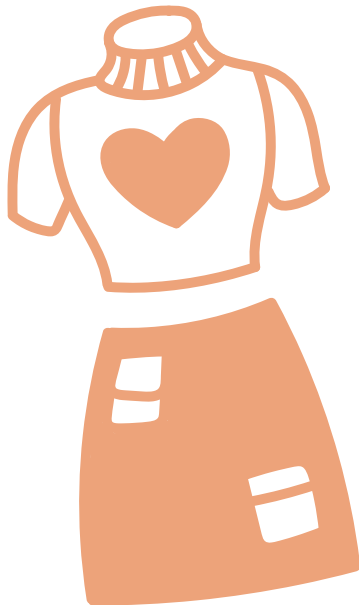


*Jacksonville State University*



*FranShay Kendal Garnett*

Assistant Dean of Students



# Welcome

## to Jax State Panhellenic

Welcome to Jax State Fraternity and Sorority Life and welcome to Jax State Panhellenic. We are so excited that you choose to go through Panhellenic Sorority Recruitment! We are committed to making your experience one to remember! You will have a wonderful opportunity to meet all five of our amazing chapters and grow into the woman that you see yourself becoming. You will meet sisters that will learn with you, grow with you, and may become a forever part of your life.

We are proud of the accomplishments of our Panhellenic Community. These strong women have raised over \$180,000 dollars for philanthropy and our community. They have donated over 4,200 hours to community and philanthropy service. They emphasize the importance of giving back, academics, leadership development, and personal growth. They truly leave every place that they touch better than where they found it.

We hope that you will be part of our future through becoming a member of this Panhellenic Community. We proud ourselves on being a place where everyone can belong. We promise that there is a place for you within Jax State Fraternity and Sorority Life and soon you will see the importance of being connected to like-minded people. These people will be the ones to help you in your college career and life in general. We wish you the very best year and hope that you will be welcomed home here in Panhellenic. You belong here. You belong with Jax State Panhellenic. You belong with Jax State Greek Life.

# Recruitment Team



Our Panhellenic Recruitment team is made up of women from all five chapters on campus. These women are here to be unbiased friends and mentors during the recruitment process. The Panhellenic Recruitment team provides unlimited support to Potential New Members and chapter members during their time as an active member! Potential New Members should get to know their recruitment team in order to utilize their knowledge and experience to better the Panhellenic community all together.





# Pi Chi

Our Panhellenic Team is a reflection of this with at least one Pi Chi from each chapter. With eight different roles, Pi Chis come together from different backgrounds, interests, and personalities, but we all have one thing in common: our love and dedication to the community! Pi Chis hold their positions 365 days of the year and govern over the five chapters on campus. Communication with all chapters while also working closely with our other two councils (IFC and NPHC) is an example of one of the many responsibilities of a Pi Chi. For the sense of recruitment, Pi Chis are mostly the “behind the scenes” team members who work on the logistics side of things while Rho Gammas are guides through the process.

## The Team

**President:** Abby

**VP of Executive Affairs:** Russell

**VP of Recruitment:** Liz

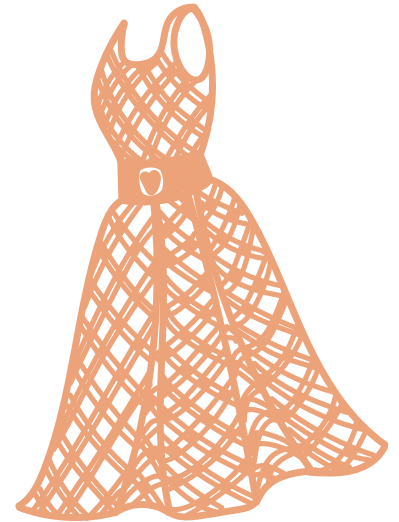
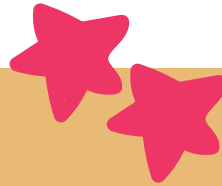
**Asst. VP of Recruitment:** Suzzanna

**VP of Administration:** Suzie

**VP of Public Relations:** Katie

**VP of Events:** MattiLynn

**VP of DEI:** Ruby





# Rho Gammas

Rho Gammas are active Panhellenic sorority members selected through a competitive interview process to be unbiased mentors and friends to PNMs before, during, and beyond Primary Recruitment week. Rho Gammas are here to help guide you through your feelings so that you can confidently navigate recruitment. Women selected to be Rho Gammas embody Panhellenic attitudes and ideals at Jacksonville State University.



## Our Charters

Alpha Omicron Pi

Phi Mu

Alpha Xi Delta

Zeta Tau Alpha

Delta Zeta





# PANHELLENIC

## Pi Chis and Rho Gammas SUMMER 2024



KENDAL  
ASSISTANT DEAN OF STUDENTS



ABBY  
PI CHI



RUSSELL  
PI CHI



LIZ  
PI CHI



JAMISON  
RHO GAMMA



KAILEE  
RHO GAMMA



KATELYN  
RHO GAMMA



MCKENZIE  
RHO GAMMA



MADISON  
RHO GAMMA



SUZANNA  
PI CHI



SUZIE  
PI CHI



KATIE  
PI CHI



MATTILYNN  
PI CHI



RUBY  
PI CHI



MARY  
RHO GAMMA



MAGGIE  
RHO GAMMA



MAKAYLA  
RHO GAMMA



MARY CHAPEL  
RHO GAMMA



MORGAN  
RHO GAMMA



AUDREY  
RHO GAMMA



AVA  
RHO GAMMA



CAMILLE  
RHO GAMMA



CAROLINE  
RHO GAMMA



CAROLINE  
RHO GAMMA



CHANNING  
RHO GAMMA



CHLOE  
RHO GAMMA



ELLIE  
RHO GAMMA



GARCIE  
RHO GAMMA



HAYLEE  
RHO GAMMA



SARA  
RHO GAMMA



TAYLER  
RHO GAMMA



WHITNEY  
RHO GAMMA



MADI WISNER  
GRADUATE ASSISTANT



You Belong in Our  
*Dreamhouse*

# Rules and Policy

- During recruitment, Positive Panhellenic Contact is observed, meaning there will be minimal contact between PNMs and sorority women.
- Potential members who know the affiliation of Pi Chis will not reveal those affiliations to other PNMs.
- Potential members must attend all events during primary recruitment. Not attending all events available may affect your opportunity to receive a bid. (Unless you have talked to us about why you are missing.)
- At the conclusion of Preference rounds, **strict silence** will begin which means **no communication** will occur between sorority women and PNMs until Bid Day.
- No Potential Member may buy anything for a sorority member, nor may a sorority member buy anything for a Prospective Member.
- You will be given a nametag. You need to wear that nametag throughout the day. Your Rho Gamma will keep up with your name tag at the end of the recruitment day.
- By signing a MRABA agreement, she is stating that she will accept either a bid from her first or second choice organization. If on bid day she chooses not to accept the bid extended to her she will be ineligible to join any NPC sorority/fraternity on this campus until the next primary recruitment.
- At the completion of her last Preference party, a Prospective Member must immediately login to ICS and complete a preference card.
- A Prospective Member is entitled to privacy when signing her preference card.
- She may not speak with her Rho Gamma, but she may speak with a member of the Executive Board or an advisor.
- Once a prospective member signs her bid card, **she may not change her card.**
- No Potential Member is allowed to attend any fraternity party or house during recruitment week.



# Positive Panhellenic Contact

To break down barriers between active sorority members and potential new members, as a Panhellenic community, we allow communication year around between the two parties.

Positive Panhellenic Contact will allow you as a potential new member to learn more about the sorority community while growing and maintaining friendships with active sorority members. All sorority women will promote and encourage personal and informative Panhellenic-spirited contact with you,

the potential new member, all year around, except during the strict silence period during primary recruitment which begins at the conclusion of Preference Round.

This makes our Panhellenic community unique because we want to always display our “Pan-love”, not just before Recruitment. This is a time where each chapter will be displaying the true meaning of sisterhood, respect, scholarship, and service.



**Fun Fact:**  
Members say that 1  
out of every 4 of their  
friends belong to a  
different sorority



# Panhellenic Code of Ethics

*We, as Panhellenic women of Jacksonville State University, agree on and commit to:*

- Uphold and demonstrate the Panhellenic spirit in thought, word and action through our chapters as well as individual members.
- Demonstrate ethical behavior and conduct ourselves in a manner consistent with the mission and values of the College Panhellenic, each inter/national organization and our university.
- Respectfully adhere to the Unanimous Agreements and all policies established by the National Panhellenic Conference.
- Avoid disparaging remarks about any sorority or collegiate woman and refrain from discussing Panhellenic matters with nonmembers, in accordance with the dignity and good manners of sorority women.
- Recognize friendly relations with all collegiate women, both sorority members and nonmembers, realizing the importance of creating and building friendships.
- Plan recruitment events that provide opportunities for the greatest possible number of women to become sorority members while protecting the rights and privileges of individuals and the chapters.
- Provide a safe, positive and enriching recruitment experience; understanding that membership is a social experience arrived at by mutual selection.
- Strive to be truthful, honorable, open and friendly to all potential new members during all recruitment events.
- Be respectful of the rights of every potential new member to make her own choices, including the right not to join the women's sorority community.
- Refrain from limiting a potential new member's chances of becoming a member of the Panhellenic community by encouraging her to make a single intentional preference or to limit her choices
- Respectfully adhere to the bylaws and recruitment rules of the Jacksonville State University Panhellenic Council.
- Abide by all local and federal laws and NPC inter/national member group bylaws.
- Hold one another accountable to these standards, remembering at all times that we represent not only our individual chapters but also the Panhellenic community as a whole.

# PHM Rights

You as a potential new member have the right to endure a safe, positive, and enriching recruitment experience. The Panhellenic team trained all summer long to guide you through this new journey. This is your experience, and you have the right to make decisions that will positively influence your future here in JSU Panhellenic. You can expect the Panhellenic team to show transparency, maintain confidentiality, and be respectful to you. You belong with JSU Panhellenic.

- *Be treated as a capable and mature person without being patronized*
- *Ask questions and receive true and objective answers from the Rho Gammas and members*
- *Ask how and why and receive straight answers*
- *Be treated as an individual*
- *Have and express opinions to Rho Gammas and Pi Chis*
- *Make informed decisions without being pressured by others.*
- *Be fully informed about the binding agreements implicit in the preference card signing*
- *Make one's own choice and decision and accept full responsibility for the results of that decision*



# Sorority Life at Jax State

Jacksonville State University's Panhellenic community promotes excellence, leadership, scholarship, and service. Our community is home to women with different majors, a wide variety of campus involvement, and an abundance of leaders. Being the "Friendliest Campus in The South", you can expect these chapters to welcome you with open arms into their organization and help you become the best version of yourself during your next four years. JSU Greek Life is so unique in the ways we come together to support one another and build friendships outside of our home chapters.

## *What can you expect as a new member?*

### **STUDY HALL HOURS**

Chapters will ask you to get a certain amount of study hall hours to help with your transition from high school to college. These study sessions are hosted by older sisters who are eager to help you with your studies. This is one of the many ways that chapters hold you accountable.

### **WEEKLY NEW MEMBER MEETINGS**

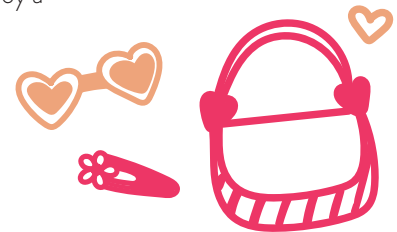
Each chapter will hold weekly meetings designated towards the New Member Education experience. At these meetings you will learn in depth information regarding your new Greek home.

### **WEEKLY CHAPTER MEETINGS**

Chapter is a time where all members come together to hear announcements, review programming, and enjoy a time of fellowship.

### **NEW MEMBER RETREAT**

Chapters will host a retreat for the new members to bond with members of their pledge class.



### **FINANCIAL OVERVIEW**

Chapters all have different financial obligations for their members. You will be given a financial transparency sheet on the second day of recruitment. This sheet will detail out what each chapter requires per semester. Below is a listed range of what to expect from chapters.

New Member: \$600 - \$1,200 per semester  
Initiated Member: \$500 - \$1,000 per semester

### **LEADERSHIP**

Within each chapter there is an abundance of leadership opportunities ranging from t-shirt chairman to president. After your first semester within your chapter, you will have an opportunity to seek out a leadership position. This is a great opportunity to build your resume and devote your time to helping your chapter thrive.

# MRABA

## *Membership Recruitment Acceptance Binding Agreement*

By signing this document prior to completing your “Preference Card”, you as a Potential New Member agree that you are willing to accept a bid from any sorority that you rank on the MRABA. If you receive a bid, an invitation to membership, from a sorority that you ranked, you are then bound to that group for one calendar year (August 2024-August 2025). If you receive a bid from an organization and decide to not accept it, you are not eligible to participate in Continuous Open Bidding during the academic year (Fall 2024 and Spring 2025).

Should you receive an invitation to a Preference round, you will sign this at the conclusion of your last part when you make your final selection. You will rank the chapter(s) you visited on Saturday, August 17, in preference order. After completing your selection, you will sign the electronic copy of the MRABA. Once this is completed and the selections have been made, it cannot be altered.

### **OPTIONS:**

1. You may choose to NOT complete the MRABA, therefor withdrawing from Primary Recruitment
2. You may choose to list any sorority whose Preference Party you attended and from whom you are willing to accept a bid from.
3. You choose to limit your choices to just one sorority whose Preference Party you attended and are willing to accept a bid from

It is essential that you understand that if you choose to single intentional preference, then you will not be maximizing your options to receive a bid for membership. You are not guaranteed to receive a bid from the one you selected.



# Frequently Asked Questions

## DO I HAVE TO BE A FRESHMAN TO PARTICIPATE IN PRIMARY RECRUITMENT?

Absolutely not! Freshman do make up for most of the grade level status for PNMs, but there typically are a few sophomores and juniors. We even encourage transfer students to participate in Recruitment if they wish to.

## WHAT IF I WANT TO BE IN A CERTAIN SORORITY?

We encourage you to go into recruitment with an open mind and trust the process. If you are set on one certain sorority, then you will potentially miss out on finding where you truly belong. Each day you will have the opportunity to talk with different women from each chapter. Just because you may not feel that special connection with the first member you conversed with, doesn't mean you should forget about them. All five of our Panhellenic chapters have unique attributes that enhance their members' experience.

## IS PRIMARY RECRUITMENT THE ONLY WAY TO ACCEPT A BID FROM A CHAPTER?

Primary Recruitment is held annually during August of each new school year. Following recruitment chapters will be allowed to participate in Continuous Open Bidding within the remainder of the Fall and during the entirety of the Spring semester. This is commonly known as COB. Chapters are enabled to extend a bid at any time to a woman currently enrolled in JSU as a full-time student.

## IF I PARTICIPATE IN PRIMARY RECRUITMENT, AM I REQUIRED TO JOIN A SORORITY?

PNMs are not obligated to join a chapter at the end of the recruitment process. This is an opportunity for you to gain insight on if our Panhellenic community is a good fit for you. At any point during the process, you can release yourself from recruitment. We encourage you to not miss out on finding your home in Greek life, but we will always have your best interest at heart.

## DOES IT HELP ME THAT I'M A LEGACY TO A CERTAIN SORORITY?

Each chapter will have their own national policy regarding legacy status. Most sororities have removed this policy to allow PNMs to have an equal opportunity with each chapter during recruitment.



# Other Councils

## *NPHC*

### *National Pan-Hellenic Council*

Alpha Phi Alpha (1906)  
Alpha Kappa Alpha (1908)  
Kappa Alpha Psi (1911)  
Omega Psi Phi (1911)  
Delta Sigma Theta (1913)  
Phi Beta Sigma (1914)  
Zeta Phi Beta (1920)  
Sigma Gamma Rho (1922)  
Iota Phi Theta (1968)



## *IFC*

### *Interfraternity Council*

Alpha Tau Omega (1865)  
Delta Chi (1890)  
Kappa Alpha Order (1865)  
Kappa Sigma (1869)  
Pi Kappa Alpha (1868)  
Pi Kappa Phi (1904)  
Sigma Nu (1869)  
Sigma Phi Epsilon (1901)





Meet



our Chapters



# Alpha Omicron Pi

## Delta Epsilon

### SYMBOL

Sheaf of Wheat

### MASCOT

Panda

### DATE FOUNDED LOCALLY

March 24, 1990

### COLOR

Cardinal Red

### NATIONAL PHILANTHROPY

Arthritis Research

### OPEN MOTTO

Inspire Ambition

### NATIONAL WEBSITE

[www.alphaomicronpi.org](http://www.alphaomicronpi.org)

### DESCRIPTION OF PHILANTHROPY

Arthritis is the nation's leading cause of disability and there is no cure. AOII helps raise awareness to support arthritis, juvenile arthritis, and related diseases. Since 1967, over \$2,000,000 has been raised by AOII chapters to go towards arthritis research.

Alpha Omicron Pi thrives to Inspire Ambition. Within Alpha Omicron Pi, they uphold the values of character, dignity, scholarship, and college loyalty.

"Alpha Omicron Pi means so much to me! Through AOII I have met some of the greatest women I will ever know. AOII's founders were strong, independent, and educated women. These women founded AOII on the idea of love among its members. In AOII we hold our values close to our hearts. We strive every day to uphold our values of Character, Dignity, Scholarship, and College Loyalty. AOII has given me my best friends and women who will be there for me no matter what. I hope that every woman going through recruitment will be able to find what I have! AOII has given me so much and I will forever be grateful for it!" - Jenna





# Alpha Xi Delta

## Epsilon Pi

### SYMBOL

The Quill

### MASCOT

BetXi Bear

### DATE FOUNDED LOCALLY

March 2, 1968

### COLORS

Double Blue and Gold

### NATIONAL PHILANTHROPY

Children Experiencing Foster Care & Homelessness

### OPEN MOTTO

The Pen is Mightier than the Sword

### NATIONAL WEBSITE

[www.alphaxidelta.org](http://www.alphaxidelta.org)

### DESCRIPTION OF PHILANTHROPY

Alpha Xi Delta is committed to helping children and youth experiencing foster care or homelessness around the United States and in the Jacksonville community. They were able to donate over \$13,000 dollars of philanthropy fundraising to the national organizations, Stand Up 4 Kids and Foster Club. Locally, the sisters volunteer with Sleep in Heavenly Peace. They are thrilled to learn and serve this new chapter of the sorority's life!

Alpha Xi Delta is dedicated to Inspiring Women to Realize Their Own Potential. Being a part of Alpha Xi Delta is to prove their values of courage, graciousness, and peace.

Being apart of this chapter has completely changed my life for the better! I have never felt more loved, valued, or appreciated until meeting these women! Alpha Xi Deltas values of courage, graciousness, and peace have never prospered more in our chapter as they do now! Freshmen Shelby never knew just how much these values would mean to her too! Every single sister has had my back for more times than I can count and I know they will be there for me whenever I need them! I know that even after I graduate college, I will always have these women to call lifelong friends! I have never been so grateful to be apart of something as I have been in Alpha Xi Delta! - Shelby



# Delta Zeta

## Lambda Gamma

### SYMBOL

Roman Lamp

### MASCOT

Turtle

### DATE FOUNDED LOCALLY

March 26, 1977

### COLORS

Rose and Green

### NATIONAL PHILANTHROPY

Hearing and Speech,  
SeriousFun Network

### OPEN MOTTO

Live Truly

### NATIONAL WEBSITE

[www.deltazeta.org](http://www.deltazeta.org)

### DESCRIPTION OF PHILANTHROPY

Through Delta Zeta's philanthropy of hearing and speech, our chapters support the Starkey Hearing Foundation, volunteering many hours and generously fundraising for the cause. SeriousFun Network's mission is to provide a year-round, life-changing environment and authentic camp experience for children with chronic and life-threatening illnesses, and Delta Zeta members volunteer at the camp as well as raise money for this philanthropy.

Delta Zeta strives to Live Truly. Within Delta Zeta, they aim to show others their values of friendship, curiosity, generosity, citizenship, empowerment, and belonging.

"Being a Delta Zeta means being a part of a sisterhood that is filled with women who continuously uplift and genuinely care for one another. My sisters constantly empower me and push me to be the best version of myself. These women remind me daily that I truly belong here. I hold each of the Delta Zeta values close to my heart, not only within the sorority but also in my everyday life. Within Delta Zeta I have been given so many opportunities that have helped me grow. I am forever thankful that I took the leap of faith and decided to go Greek and I am so very blessed that I found my home here within Delta Zeta. I would not be who I am today if it was not for my sisters. These women are not just my friends, they are my lifelong sisters. This sisterhood is truly a love that is ever steadfast. I will forever be so proud to be a Delta Zeta. DZLAM!" - Katie



# Phi Mu

## Kappa Sigma

### SYMBOL

Quatrefoil

### MASCOT

Sir Fidel the Lion

### DATE FOUNDED LOCALLY

March 21, 1970

### COLORS

Rose and White

### NATIONAL PHILANTHROPY

Children's Miracle Network Hospitals

### OPEN MOTTO

Les Soeurs Fideles (The Faithful Sisters)

### NATIONAL WEBSITE

[www.phimu.org](http://www.phimu.org)

### DESCRIPTION OF PHILANTHROPY

International non-profit organization that raises funds for children's hospitals, medical research, and community awareness.

Phi Mu, The Faithful Sisters. To live as a Phi Mu is to uphold their values of love, honor, and truth.

"Phi Mu's three values are love, honor, and truth. These values are something that our chapter holds very close to our hearts! Being a Phi Mu means being a part of a genuine sisterhood that will always encourage you to be the best version of yourself. Going through recruitment, I searched for a group of women to uplift and support each other. This sisterhood is exactly what I prayed for as a freshman coming into college! Phi Mu is where I have made my lifelong friends, grown as a woman, and made the memories of a lifetime. I will be forever grateful for the opportunities that Phi Mu has given me!! These girls mean everything to me, and I am so excited to see what this year has in store for our chapter!!" - Kaylee



# Zeta Tau Alpha

## Zeta Psi

### SYMBOL

Five Pointed Crown,  
Strawberry

### DATE FOUNDED LOCALLY

December 6, 1969

### COLORS

Turquoise and Steel Gray

### NATIONAL PHILANTHROPY

Breast Cancer Education and  
Awareness

### OPEN MOTTO

Seek the Noblest

### NATIONAL WEBSITE

[www.zetataualpha.org](http://www.zetataualpha.org)

### DESCRIPTION OF PHILANTHROPY

She could be your mother. Your sister. Your grandmother. Your aunt. She could even be you. Breast cancer affects 1 in 8 women in the United States today. This is why ZTA's national philanthropy is Breast Cancer Education and Awareness. We partner with the National Football League, the American Cancer Society, and Bright Pink to educate, increase awareness, and support research. Our chapter is proud to have raised over \$68,000 for the cause last year alone through our Pink Out Game and Big Moment on Campus talent show.

Zeta Tau Alpha strives to Seek the Noblest. To be a Zeta Tau Alpha is to know the values of friendship, leadership, service, knowledge, integrity, and community. Hear what their President, Tori Wilkinson, has to say about being a Zeta Tau Alpha and what their values mean to her!

"Zeta Tau Alpha has given me so many amazing opportunities throughout my time here at Jax State! ZTA means being a part of something bigger than myself! Zeta's values have guided me in becoming the person I am today and I am forever grateful for the authentic sisterhood within this chapter. Zeta Tau Alpha represents something that is truly inspiring and it has pushed me these past three years that I have been at Jax State. I cannot imagine the woman I would be today without my Zeta sisters by my side! Zeta Tau Alpha is more than just four years, it is for a lifetime!" - Tori



# How to Survive Recruitment

## GRACIE

Remember to always be yourself. You should never change yourself or your values for the sake of a sorority. If you try to be something you're not, you'll likely end up on a chapter with girls you don't truly click with. If you focus on being your true, unique self then the right chapter will spot that and embrace the person you are!

## KATELYN

"Everything happens for a reason! You might not see it now, but later on you might be so thankful that you were redirected to a sorority you would have never imagined! Also, don't go somewhere just because your friends are because remember, this is YOUR experience!! Take deep breaths, and enjoy this time! It flies by!!"

## MORGAN

Trust the process! You will ultimately end up where you are meant to be. Try not to compare

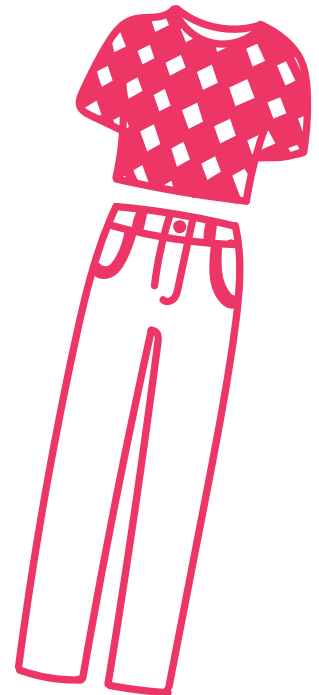
your experience to others and make it YOURS. Focus on being yourself and being open-minded. Any of the 5 Panhellenic chapters here at JSU would be lucky to have someone like you! Don't be afraid to ask questions and depend on your Rho Gamma for advice. Most of all, cherish this experience and all it has to offer. Finding sisterhood is a true blessing and I promise you will not regret GOING GREEK!

## AVA

Go into recruitment with high energy and a positive mindset! These organizations have worked so hard all summer and they can't wait to meet YOU!! Also, really soak up all of the moments of recruitment! It can be nerve racking, but I look back on my time as a PNM very fondly. The women in your Rho Gam group are your first friends in Greek life, so be sure to always cheer each other on in your endeavors no matter where you end up! xoxo, Rho Gam Ava

## SARA

Be yourself and have fun! This week is all about you finding your home, keep an open mind and enjoy every minute of it. Make sure to keep your ideas of each sorority to yourself as you don't want to influence anyone else's view of a sorority because of your own opinions



# How to Thrive at Jax State



Here at Jax State there are so many opportunities to thrive. My biggest tip to incoming students, and current students is to get involved on campus. There are so many clubs and organizations you can join that will make Jacksonville feel like home. There is truly something for everyone, you just have to be willing to try new things! In Alpha Omicron Pi, we inspire each other to be ambitious and step out of our comfort zones. We celebrate each other's successes while also holding each other accountable. The people you meet at Jax State will become your biggest supporters in everything you do. Looking back on my past six semesters here I could not imagine my college experience without AOPI or any of the other organizations I'm a part of. At Jax State you will learn just as much outside of the classroom as you do inside of it, but you have to be willing to take the opportunities that come your way. By saying yes to these opportunities I am confident all of the skills I've learned and friendships I've made will stay with me beyond my years here!

Morgan Carroll, PC '21, Alpha Omicron Pi

# How to Thrive at Jax State



If i had one piece of advice on how to thrive at JSU it would be; Never be afraid to step outside of your comfort zone. Before college I always wanted to join a sorority and be apart of a sisterhood. Although I was nervous, I became excited very quickly. Joining a sorority at JSU has been one of my biggest joys of college. It has opened up more opportunities for me than i could've ever imagined. I am surrounded daily by people who want what is best for me and encourages me to do so on a daily basis. I have grown so much in my time here and i owe it all to JSU for helping shape me into the woman i am today. So, step out of your comfort zone and don't be afraid to do things you wouldn't normally do. JSU is full of the most amazing and friendly people you will ever meet, and you will fall in love with this place just like i did.

Savanna Eakin, PC '21, Alpha Xi Delta

# How to Thrive at Jax State



Jax State has tons of ways to get involved, through clubs and events, you can make a home for yourself here. Our sisters are in a few different groups at Jax State, such as SGA, Ballerinas, JSU Ambassadors, and the swim team! We've also had sisters who have been in freshman forum, which is a good place to start if you're new to JSU and want to meet a bunch of people but also make it worth your while. Another good way to thrive at Jax State is to go through fraternity/sorority recruitment! You can make so many friends through it, which can lead to opportunities and never having to do something alone. Jacksonville is a small city, but there's always a place to go and hangout or study. Getting to be a student at Jax State has been such an amazing opportunity for not only myself but also for Delta Zeta as a whole!

Leila McClendon, Spring PC' 23, Delta Zeta



# How to Thrive at Jax State



Your time at Jacksonville State University is a season of life that establishes lifelong friendships, memories, and shapes who you are as a woman. Phi Mu believes that every step of your college journey should be filled with women that support, love, and encourage you as you navigate this special time in your life. While there are many ways to thrive at JSU, here are just a few tips from our sisters in Phi Mu:

Always be willing to get out of your comfort zone and try new experiences. College is a time where you learn who you are and what you love. You never know what new experience, friendship, or opportunity could shape the rest of your life.

Remember that there is no “perfect” college experience. College is a time where you mess up, succeed, and grow. Everyone is going to have a different college experience, and that is ok. Just because your time in college looks different than others does not mean that it is not just as special. Always be thankful for the little moments, interactions, and experiences that you will gain from your time at JSU. Phi Mu is excited for you to be in Jacksonville, and we cannot wait to watch you thrive in this exciting new season of your life.

Karis O’Bryant, PC ‘22, Phi Mu

# How to Thrive at Jax State



The best way to thrive at Jax State is to get involved!! Getting involved on campus has truly been one of the best decisions I ever made. Being a Marching Ballerina, a member of ZTA, and being Miss JSU has led to priceless friendships and precious memories. You have already taken the first step by participating in sorority recruitment!! Trying something new can often be scary and intimidating so I am so proud of you for taking this step towards getting involved because it can lead to so much more! I wouldn't have even thought to compete for Miss JSU if I hadn't been encouraged by one of my sweet Zeta sisters. Getting involved also provides a support system during the transition of college! At every Marching Ballerina performance, I can always look up into the stands and see Zetas cheering me on!! This is why I love our sisterhood so much and am so thankful I got involved!! Whatever your passion, Jax State is your opportunity to pursue it!!

Grace Ann Lundy, PC'22, Zeta Tau Alpha

*Sign Up Today!*

