

*Jax State Presents*  
**FRATERNITY & SORORITY LIFE**

**RIGHT** *here*  
**RIGHT** *now*

*Featuring...*

ALPHA OMICRON PI | ALPHA XI DELTA | DELTA ZETA | PHI MU | ZETA TAU ALPHA | ALPHA KAPPA ALPHA  
ALPHA PHI ALPHA | DELTA SIGMA THETA | OMEGA PSI PHI | PHI BETA SIGMA | SIGMA GAMMA RHO | ZETA PHI BETA  
IOTA PHI THETA | KAPPA ALPHA PSI | ALPHA TAU OMEGA | DELTA CHI | KAPPA ALPHA ORDER | KAPPA SIGMA  
PI KAPPA ALPHA | PI KAPPA PHI | SIGMA NU | SIGMA PHI EPSILON | ALPHA PSI LAMDA

**JAX  
STATE**  
Jacksonville State University

**RIGHT** *here*  
**RIGHT** *now*

**LEADERSHIP-SCHOLARSHIP-FRIENDSHIP-SERVICE**

# QUICK FINDS



- 3** Letter from Assistant Dean of Students
- 4** Letter from Council Presidents
- 5** Fraternity & Sorority Life: What We Are All About

- 6** Did You Know?
- 8** Panhellenic Council
- 13** National Pan-Hellenic Council

- 16** Interfraternity Council
- 20** Frequently Asked Questions
- 22** Greek Glossary
- 24** Contact Us



**KENDAL GARRETT**

Assistant Dean of Students



**MADI WISNER**

Fraternity and Sorority Life  
Graduate Assistant

# WELCOME TO *Tax State*

We are so glad that you chose Jacksonville State University to pursue your college education. We are committed to making your JSU experience one to remember! You will have a wonderful opportunity to continue to develop intellectually, socially, culturally, physically, and spiritually in preparation for life and your future career. You will meet peers that will learn with you, grow with you, and may become a forever part of your life. A big part of going to college is engaging in the life of the campus. This will make your college experience very special.

We hope that you are interested in joining fraternity and sorority life here on campus. We are proud of the accomplishments of our fraternity and sorority life at Jacksonville State University and invite you to join this award-winning community. Our fraternities and sororities put a strong emphasis on academics, health and safety initiatives, leadership development, organizational skills, and

personal growth. We hope that you will be part our future celebrations. Through becoming a member of a fraternity or sorority, you will be prepared for a successful college endeavor.

We proud ourselves on being a place where everyone can belong. You will get to share experiences with others and develop relationships that will last a lifetime. Our Panhellenic, National PanHellenic, and Interfraternity Councils stress the importance of being connected to likeminded people. These people will be the ones to help yo u in your college career. We wish you the very best freshman year and hope that you will become apart of Fraternity and Sorority Life at Jacksonville State University. You belong here. You belong with JSU Greek Life.

Sincerely,

*Kendal Garrett*

Assistant Dean of Students



## CONGRATULATIONS ON YOUR DECISION TO ATTEND JACKSONVILLE STATE UNIVERSITY!

As you prepare to begin a new chapter in your life, we want to encourage you to consider participating in fraternity and sorority recruitment or membership intake. One of the easiest ways to get involved at JSU is to explore our fraternity and sorority community. JSU is an amazing campus and has so many academic and extracurricular opportunities to offer you. Our experience within the fraternity and sorority community has helped us to adjust to the university, and we hope it will do the same for you.

Your experience as a member of one of our fraternity or sorority chapters will provide a framework for achievement and strong personal development that may be applied to all aspects of your life. JSU's fraternities and sororities emphasize the personal attributes that will make you a solid, well-rounded student. Academic support, lifelong friendships, community service events and campus leadership are just a few of the opportunities available to JSU fraternity and sorority members.

Inside this booklet you will find information about all three Greek councils as well as information about fall recruitment. Once again, we welcome you to JSU! We wish you the best of luck, not only through recruitment, but also throughout your time at Jacksonville State University.

Good Luck and Go Gamecocks!

*Abby Swearingen*

CPH President

*Tierra Thatch*

NPHC President

*Evan Cox*

IFC President



# FRATERNITY AND SORORITY LIFE:

*What We Are All About*



## LEADERSHIP

A university is the ideal place for you to develop your leadership potential. Joining a sorority or fraternity provides individuals with numerous opportunities to demonstrate leadership. Whether it be as an officer or committee member, valuable experience will be gained - experience that will be well used in future endeavors. Fraternity and sorority life offers all members opportunities for such advancement.

## SCHOLARSHIP

Fraternities and sororities at JSU are committed to excellence in academic pursuits. By providing adequate academic resources, helping develop relationships with faculty members, and offering study hours our JSU Greek organizations have managed to keep our all Greek GPA above the all JSU GPA for the last 10 years, and have maintained above a 3.1 GPA for the last five years.

## SERVICE

At the heart of every fraternity and sorority are philanthropic organizations they work extremely closely with. One of the greatest rewards that fraternity and sorority life can offer is the personal development gained through community service and philanthropic work.

## FRIENDSHIP

An unspoken aspect, and probably the most important aspect, of fraternity and sorority life is the bonds and friendship shared among chapter members. That is what separates them from a non Greek organization. It is more than friendship. It is the understanding that each member has taken a vow to uphold the foundations and values of the organization. Being a member of a sorority or fraternity is like having a second family.

**DID  
YOU  
KNOW?**

**10 OF 25**  
AMBASSADORS  
ARE GREEK

**10 OF 14**  
GAMECOCK ORIENTATION  
LEADERS ARE GREEK



All fraternal organizations were founded on specific ideals and beliefs that are significant to the membership and help set each organization apart from one another. While those ideals differentiate each organization, there are four areas or "pillars"; Scholarship, Leadership, Service, and Friendship; of fraternity and sorority life which are universally embraced by all organizations.

MISS JAX STATE IS GREEK

MISS JACKSONVILLE STATE UNIVERSITY IS GREEK

MISS FRIENDLY IS GREEK

MR. JAX STATE IS GREEK

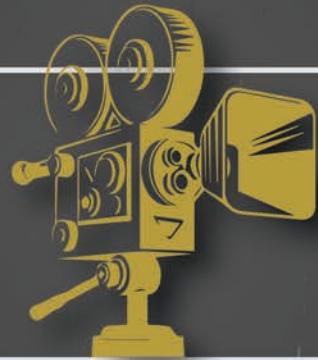
# Did You Know?

In Fall 2023, fraternity and sorority members GPA was **3.32** compared to the average JSU student of **2.73**

**93%** of members indicate that their chapter provides academic resources to members to assist them in their studies

Members of fraternities and sororities are **13%** more likely to attend Jax State in their second year

**93%** say that joining a fraternity/sorority has had a positive impact on their life



**94%** say they can articulate leadership skills that they gained through membership in a fraternity/sorority

Members of fraternities and sororities are **19%** more likely to graduate from Jax State

**96%** say they have increased social skills through fraternity/sorority membership

**94%** say that their chapter holds its members to strict academic standards

In 2023, fraternities and sororities at Jax State raised **\$180K** for charitable organizations and volunteered **4,622+** hours with the local community and national philanthropies



## PANHELLENIC COUNCIL

The Panhellenic Council at Jacksonville State University is the governing body of the five National Panhellenic Conference sororities on campus. The Panhellenic Council strives to create the best possible college experience for all of its members and member organizations by operating under its core ideology: promote the positive,

develop women, and create - an environment of unity and fairness. It promotes cooperation and cohesiveness within the Greek community, oversees the formal recruitment process for its member groups, and sponsors community service opportunities, social events, and education programs throughout the year.

### RECRUITMENT TEAM

The Panhellenic Executive Board (Pi Chis) and the Panhellenic Recruitment Counselors (Rho Gammas) play an integral part in the recruitment process at JSU. Their purpose is to ensure that potential new members have a positive experience during recruitment week and to answer any questions as needed.

From the start of recruitment, potential new members (PNMs) are part of a small group of fellow potential new members and are assigned to a Rho Gamma. She is a member of a sorority, but has been selected to participate on the Panhellenic side of recruitment to assist the Pi Chis and the potential new members.

### FORMAL RECRUITMENT

Recruitment week consists of three rounds of events that will allow you to learn more about each sorority. The events will show you what life in a sorority is like and will give you the chance to meet the sorority women in each organization and ask any questions you might have about activities, financial obligations, scholarship, new member programs, and campus life in general. It is extremely important to keep an open mind during this process and always remember to take into account where you feel the most comfortable.

### THE FIVE PANHELLENIC ORGANIZATIONS AT JSU:

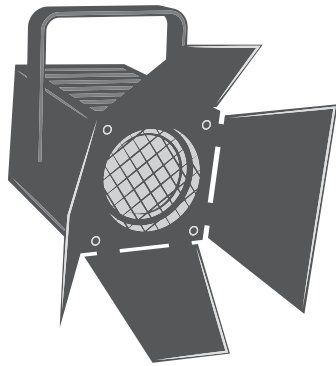
- Alpha Omicron Pi
- Alpha Xi Delta
- Delta Zeta
- Phi Mu
- Zeta Tau Alpha

The Formal Recruitment process is a mutual selection process. All potential new members will visit every sorority during the first round (Philanthropy), but the remaining rounds are by invitation only. As the sororities are narrowing down the number of women attending each round of events, PNMs may only accept a certain number of invitations to each round.

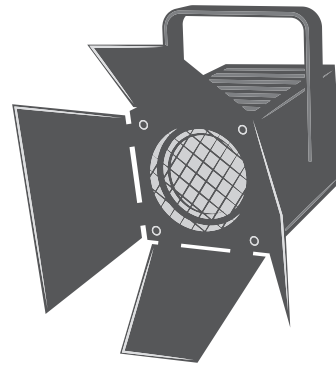
### FORMAL RECRUITMENT SCHEDULE:

- AUGUST 13 – PNM Move In / Tailgate Tuesday
- AUGUST 14 – PNM Orientation
- AUGUST 15 – Philanthropy
- AUGUST 16 - Sisterhood and Values
- AUGUST 17 – Preference
- AUGUST 18 – Bid Day

[CLICK HERE FOR THE JAX STATE PANHELLENIC RECRUITMENT REGISTRATION LINK](#)



# PANHELLENIC COUNCIL: *What to Wear*



## A) ROUND 1

### PHILANTHROPY

During this round you will learn about all five chapters. The round is utilized as a way to acquaint the potential new members with the philanthropic activities of each organization.

## B) ROUND 2

### SISTERHOOD & VALUES

The Sisterhood & Values round of recruitment begins to show you a deeper side of the chapter. You will visit up to four chapters during this round for forty minutes each. Women from each chapter will share with you what it means to be a member of their organization and what they value in their organization and sisterhood. This day is a bit dressier; a sundress is appropriate.

## C) ROUND 3

### PREFERENCE

The last round of recruitment, Preference is the most formal. Something that you would wear to a wedding would be appropriate. You will visit up to two chapters for sixty minutes each.



## ALPHA OMICRON PI

Chapter Designation: Delta Epsilon  
 Symbol: Sheaf of Wheat  
 Mascot: Panda  
 Jewel: Ruby  
 Flower: Jacqueminot Rose  
 Open Motto: Inspire Ambition  
 Colors: Cardinal Red  
 National Philanthropy: Arthritis Research  
 Description of Philanthropy: Arthritis is the nation's leading cause of disability and there is no cure. AOII helps raise awareness to support arthritis, juvenile arthritis, and related diseases. Since 1967, over \$2,000,000 has been raised by AOII chapters to go towards arthritis research.  
 Founding Location: Barnard College, New York, NY  
 Date Founded Nationally: January 2, 1897  
 Date Founded Locally: March 24, 1990  
 National Website: [www.alphaomicronpi.org](http://www.alphaomicronpi.org)



## ALPHA XI DELTA

Chapter Designation: Epsilon Pi  
 Symbol: Quill  
 Mascot: BetXi Bear  
 Jewel: Pearl & Diamond  
 Flower: Pink Rose  
 Open Motto: The Pen is Mightier than The Sword  
 Colors: Double Blue & Gold (Light Blue, Dark Blue, Gold)  
 National Philanthropy: Children and Youth Experiencing Foster care or Homelessness  
 Description of Philanthropy: Alpha Xi Delta is committed to helping children and youth experiencing foster care or homelessness around the United States and in the Jacksonville community. They were able to donate over 1,400 dollars of philanthropy fundraising to the national organizations, Stand Up 4 Kids and Foster Club. Locally, the sisters volunteer at the Jacksonville Christian Outreach Center helping to provide impoverished members of our community. They are thrilled to learn and serve this new chapter of the sorority's life!  
 Founding Location: Lombard College, Galesburg, IL  
 Date Founded Nationally: April 17, 1893  
 Date Founded Locally: 1968  
 National Website: [www.alphaxidelta.org](http://www.alphaxidelta.org)



## DELTA ZETA

Chapter Designation: Lambda Gamma  
 Symbol: Roman Lamp  
 Mascot: Turtle  
 Jewel: Diamond  
 Flower: Killarney Rose  
 Open Motto: Delta Zeta. Be more, do more, Care more.  
 Colors: Rose & Green  
 National Philanthropy: Speech and Hearing Impairment and the Painted Turtle Camp  
 Description of Philanthropy: Through Delta Zeta's philanthropy of speech and hearing, our chapters support local and national speech and hearing organizations, volunteering many hours and generously fundraising for the cause. The Painted Turtle's mission is to provide a year-round, life-changing environment and authentic camp experience for children with chronic and life-threatening illnesses, and Delta Zeta members volunteer at the camp as well as raise money for this philanthropy.  
 Founding Location: Miami University, Oxford, OH  
 Date Founded Nationally: October 24, 1902  
 Date Founded Locally: March 26, 1977  
 National Website: [www.deltazeta.org](http://www.deltazeta.org)



## PHI MU

Chapter Designation: Kappa Sigma  
 Symbol: Quatrefoil  
 Mascot: Lion (Sir Fidel), Ladybug  
 Flower: Rose Carnation  
 Open Motto: Les Soeurs Fideles (The Faithful Sisters)  
 Colors: Rose & White  
 National Philanthropy: Children's Miracle Network Hospitals (CMNH)  
 Description of Philanthropy: International non-profit organization that raises funds for children's hospitals, medical research, and community awareness.  
 Founding Location: Wesleyan College, Macon, GA  
 Date Founded Nationally: March 4, 1852  
 Date Founded Locally: 1970  
 National Website: [www.phimu.org](http://www.phimu.org)



## ZETA TAU ALPHA

Chapter Designation: Zeta Psi  
 Symbol: Five Pointed Crown & the Strawberry  
 Flower: White Violet  
 Open Motto: Seek the Noblest  
 Colors: Turquoise Blue & Steel Gray  
 National Philanthropy: Breast Cancer Education & Awareness  
 Description of Philanthropy: Through projects and partnerships, we educate, increase awareness, and support research. Projects and partnerships include: The Susan G. Komen Breast Cancer Foundation, Yoplait and Save Lids to Save Lives, the National Football League, Self Magazine, Lifetime Television, Courage Nights with Betsey Johnson, the Survivor Recognition program at the Race for the Cure nationwide, Pink Out games at university athletic events nationwide, "Think Pink" Week, Storm the Dorm events for distributing educational materials to collegians.  
 Founding Location: Longwood University, Farmville, VA  
 Date Founded Nationally: October 15, 1898  
 Date Founded Locally: December 6, 1969  
 National Website: [www.zetataualpha.org](http://www.zetataualpha.org)





# NATIONAL PAN-HELLENIC COUNCIL



The National Pan-Hellenic Council, Incorporated (NPHC) is currently represented at Jacksonville State University by eight of nine international Black Greek letter sororities and fraternities:

- Alpha Phi Alpha Fraternity, Inc.
- Alpha Kappa Alpha Sorority, Inc.
- Alpha Kappa Alpha Sorority, Inc.
- Omega Psi Phi Fraternity, Inc.
- Delta Sigma Theta Sorority, Inc.
- Phi Beta Sigma Fraternity, Inc.
- Zeta Phi Beta Sorority, Inc.
- Sigma Gamma Rho Sorority, Inc.
- Iota Phi Theta Fraternity, Inc.

NPHC promotes diversity, equity, and inclusion for all. The primary purpose and focus of NPHC member organizations remains community awareness and action through educational, economic, and cultural service activities.

**FALL 2024 NPHC EXPO:**  
*September 17, 2024*

**NPHC WEEK:**  
*September 16-20, 2024*

Membership selection in NPHC is an individualized process that is different for each organization. Chapters choose the time when they will take new members. This process, known as intake, generally begins with an interest meeting followed by a period of membership education. The membership process culminates with initiation and a new member presentation in which the organization's new members are revealed to the community. NPHC chapters embrace a lifetime commitment philosophy and aim to assure the continuance of academic achievement, political awareness, and community service. We strongly encourage those interested in the Membership Intake process to contact the respective NPHC organizations for more information.

## CLICK HERE FOR NPHC EXPO REGISTRATION

In order to participate in the intake process with any NPHC organization at JSU you must first attend NPHC Expo. This event will give you the opportunity to learn more about the eight NPHC organizations which are currently active at JSU.



## ALPHA KAPPA ALPHA

Chapter Designation: Lamba Pi  
Symbol: Ivyleaf  
Flower: Tea Rose  
Open Motto: By culture and by merit  
Colors: Salmon Pink & Apple Green  
Founding Location: Howard University, Washington D.C.  
Date Founded Nationally: January 15, 1908  
National Website: [www.aka1908.com](http://www.aka1908.com)



## ALPHA PHI ALPHA

Chapter Designation: Xi Xi  
Symbol: Great Sphinx of Giza  
Flower: Yellow Rose  
Open Motto: First of All, Servants of All, We Shall Transcend All  
Colors: Old Gold & Black  
Founding Location: Cornell University, Ithaca, NY  
Date Founded Nationally: December 4, 1906  
National Website: [www.apa1906.net](http://www.apa1906.net)



## DELTA SIGMA THETA

Chapter Designation: Kappa Beta  
Symbol: Fortitude  
Flower: African Violet  
Open Motto: Intelligence is the Torch of Wisdom  
Colors: Crimson and Cream  
Founding Location: Howard University, Washington DC  
Date Founded Nationally: January 13th, 1913  
National Website: [www.deltasigmatheta.org](http://www.deltasigmatheta.org)



## OMEGA PSI PHI

Chapter Designation: Theta Eta  
Mascot: Dog  
Flower: African Violet  
Colors: Royal Purple and Old Gold  
Founding Location: Howard University, Washington DC  
Date Founded Nationally: November 17, 1911  
National Website: [www.oppf.org](http://www.oppf.org)



## PHI BETA SIGMA

Chapter Designation: Pi Kappa  
Symbol: Dove  
Flower: White Carnation  
Open Motto: Culture for Service and Service for Humanity  
Colors: Royal Blue and Pure White  
Founding Location: Howard University, Washington DC  
Date Founded Nationally: January 9, 1914  
National Website: [www.phibetasigma1914.org](http://www.phibetasigma1914.org)



## SIGMA GAMMA RHO

Chapter Designation: Mu Xi  
Mascot: The Poodle  
Flower: Yellow Tea Rose  
Open Motto: Greater Service, Greater Progress  
Colors: Royal Blue and Gold  
Founding Location: Butler University, Indianapolis, IN  
Date Founded Nationally: November 12, 1922  
National Website: [www.sgrho1922.org](http://www.sgrho1922.org)



## ZETA PHI BETA

Chapter Designation: Chi Nu  
 Symbol: White Dove  
 Flower: White Rose  
 Colors: Royal Blue and White  
 Founding Location: Howard University, Washington DC  
 Date Founded Nationally: January 16, 1920  
 National Website: [www.zphib1920.org](http://www.zphib1920.org)



## IOTA PHI THETA

Chapter Designation: Epsilon Omicron  
 Symbol: Centaur  
 Flower: Yellow Rose  
 Colors: Charcoal Brown and Gilded Gold  
 Founding Location: Morgan State University, Baltimore MD  
 Date Founded Nationally: September 19, 1963  
 National Website: [www.iotaphitheta.org](http://www.iotaphitheta.org)



## KAPPA ALPHA PSI

Chapter Designation: Eta Mu  
 Symbol: Diamond  
 Flower: Red Carnation  
 Colors: Crimson and Cream  
 Founding Location: Bloomington, Indiana  
 Date Founded Nationally: January 5th, 1911  
 National Website: [www.kappaalphapsi1911.com](http://www.kappaalphapsi1911.com)  
 \*Expected to return Spring 2025



# INTERFRATERNITY COUNCIL

The Interfraternity Council (IFC) is the governing body for JSU's eight North American Interfraternity Conference organizations. The eight IFC organizations at JSU are Alpha Tau Omega, Delta Chi, Kappa Alpha Order, Kappa Sigma, Pi Kappa Alpha, Pi Kappa Phi, Sigma Phi Epsilon, and Sigma Nu. Take the time to learn about the various fraternities that are on campus and what joining a fraternity can do for you. IFC Tailgate Tuesday is a new requirement for IFC Recruitment. You must register and be at the event to join an IFC Fraternity. This event was created so you can meet every single IFC Fraternity before you make a decision to join.

**IFC RUSH KICKOFF:**  
*August 27, 2024*

**IFC RECRUITMENT WEEK:**  
*August 26-30, 2024*

All other events will be planned and hosted by each individual fraternity. Please contact the organizations to find out more about the events they will be hosting. Contact information can be found on the JSU Fraternity and Sorority Life Website.

**CLICK HERE FOR IFC RECRUITMENT INTEREST FORM**

All students who register for IFC Rush Week are eligible to receive a scholarship awarded by the Interfraternity Council





### ALPHA TAU OMEGA

Chapter Designation: Jacksonville State  
Flower: White Tea Rose  
Open Motto: Love and Respect  
Colors: Azure and Gold  
Philanthropy: Stop Soldier Suicide  
Founding Location: Virginia Military Institute  
Date Founded Nationally: September 11, 1865  
National Website: [www.ato.org](http://www.ato.org)



### DELTA CHI

Chapter Designation: Jacksonville State Chapter  
Flower: White Carnation  
Open Motto: Leges (Law)  
Colors: Red and Buff  
National Philanthropy: Jimmy V Foundation  
Founding Location: Cornell University, Ithaca, NY  
Date Founded Nationally: October 13, 1890  
National Website: [www.deltachi.org](http://www.deltachi.org)



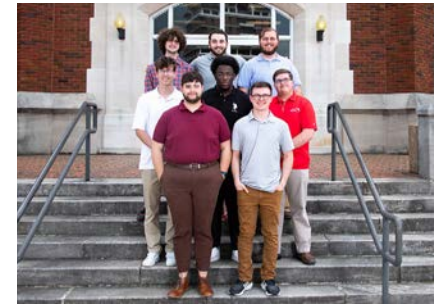
### KAPPA ALPHA ORDER

Chapter Designation: Delta Phi  
Flower: Crimson Rose and Magnolia Blossom  
Open Motto: Dieu et les Dames (God and the Ladies)  
Colors: Crimson and Old Gold  
National Philanthropy: Muscular Dystrophy Association  
Founding Location: Washington College, Lexington, VA  
Date Founded Nationally: December 21, 1865  
National Website: [www.kappaalphaorder.org](http://www.kappaalphaorder.org)



### SIGMA NU

Chapter Designation: Iota Lambda  
Flower: White Rose  
Vision Statement: Excelling with Honor  
Colors: Black, White, Gold  
National Philanthropy: Helping Hand Initiative  
Founding Location: Virginia Military Institute, Lexington, VA  
Date Founded Nationally: January 1, 1869  
National Website: [www.sigmanu.org](http://www.sigmanu.org)



### SIGMA PHI EPSILON

Chapter Designation: Alabama Theta  
Chapter Flower: Violet and Red Rose  
Open Motto: Virtue, Diligence, and Brotherly Love  
Colors: Royal Purple, Red, and Gold  
Founding Location: Richmond, VA  
Date Founded Nationally: November 1, 1901  
National Website: [www.sigep.org](http://www.sigep.org)



### KAPPA SIGMA

Chapter Designation: Lambda Gamma  
Flower: Lily of the Valley  
Open Motto: Bononia Docet (Bologna Teaches)  
Colors: Scarlet, White, Emerald Green  
National Philanthropy: A Greater Cause to Military Heroes  
Founding Location: University of Virginia, Charlottesville, VA  
Date Founded Nationally: December 10, 1869  
National Website: [www.kappasigma.org](http://www.kappasigma.org)



### PI KAPPA ALPHA

Chapter Designation: Colony  
Flower: Lilly-of-the-Valley  
Open Motto: Scholars, Leaders, Athletes, Gentlemen  
Colors: Garnet and Gold  
Chapter Philanthropy: Gary Sinise Foundation  
Founding Location: University of Virginia, Charlottesville, VA  
Date Founded Nationally: March 1, 1868  
National Website: [www.pikes.org](http://www.pikes.org)



### PI KAPPA PHI

Chapter Designation: Delta Epsilon  
Flower: Red Rose  
Open Motto: Nothing Shall Ever Tear Us Asunder  
Colors: White, Gold, Blue Auxiliary  
National Philanthropy: The Ability Experience  
Founding Location: College of Charleston, Charleston, SC  
Date Founded Nationally: December 10, 1904  
National Website: [www.pikapp.org](http://www.pikapp.org)



# Coming Soon

## ALPHA PSI LAMDA

### NALFO COUNCIL

Chapter Designation: Jacksonville State University Interest Group  
 Flower: Gold Rose  
 Symbol: Jaguar  
 Colors: Gold and White  
 Founding Location: The Ohio State University in Columbus, Ohio  
 Founded Nationally: February 11, 1985  
 National Website: [www.alphapsilambda.net](http://www.alphapsilambda.net)



[CLICK HERE FOR THE ALPHA PSI LAMBDA INTEREST FORM](#)

## FREQUENTLY ASKED QUESTIONS



### CAN FRATERNITY & SORORITY LIFE MEMBERSHIP HELP STUDENTS BE ACADEMICALLY SUCCESSFUL?

Greek-letter organizations were founded on the principle of academic achievement. Scholastic success is in the student's favor when you factor in help from fellow brothers and sisters, study sessions, workshops about study skills, test taking strategies, time management, and class scheduling assistance. Ultimately, the responsibility for succeeding in the classroom is up to the individual student. But, with the broad range of resources and incentives provided by the Greek community and the university, students can better achieve their academic potential.

### WILL FRATERNITY & SORORITY LIFE ASSIST STUDENTS AS THEY BEGIN THEIR CAREERS?

One of the tremendous assets of affiliation with a Greek-letter organization is the nationwide network of alumni/ae members of the organization. As a student prepares for entry into the career world, alumni/ae members can assist in job placement through their knowledge of where

### WHAT ARE THE EXPENSES ASSOCIATED WITH MEMBERSHIP ARE THERE ANY RESOURCES TO HELP FINANCE MEMBERSHIP?

Like any opportunity for involvement in college, there is a financial commitment associated with joining a fraternity or sorority. The costs go toward council and national fees, chapter operating expenses and social functions. Students and alumni set the fees for membership in any given chapter, and those fees can be put toward national organization fees, operational expenses, philanthropic endeavors, insurance, retreat costs, social expenditures, scholarship funding, and parent and alumni functions. All prospective new members are highly encouraged to inquire about membership costs during the recruitment process.

Be aware that additional costs may be incurred throughout the semester for gifts, pictures, social events, t-shirts, etc.

jobs are and who is hiring. In addition, Greek Life will assist students in developing transferable skills that will be needed in the career world, such as management, leadership development, communications, and more.



### WHAT IS INTAKE?

Intake is the process of membership selection used by fraternities and sororities within the National Pan-Hellenic Council (NPHC).

### WHAT IS RECRUITMENT?

Recruitment is the official process to get into a fraternity or sorority affiliated with the Panhellenic Council (CPC) or the Interfraternity Council (IFC). You must register to go through the process at the council websites. Both IFC and Panhellenic hold their Formal Recruitment processes in the fall semester.



### WHAT IS THE TIME COMMITMENT INVOLVED IN BELONGING TO A FRATERNITY OR SORORITY?

While there are certain attendance requirements, a well-balanced schedule is encouraged for all members. Through involvement with the chapter, students will learn to better manage their time by balancing academics, work, and other commitments. Academic commitments are the first priority and many Greek members hold student jobs as well. Greek organizations are conscious of the full schedules that most students have and offer flexibility as much as possible. Students find that being active in a fraternity or sorority is well worth the time they put into it.



### WHAT ABOUT HAZING IN FRATERNITIES & SORORITIES?

Fraternities and sororities were founded on strong moral, social, and academic principles. Hazing, or any activity which subjects members to harassment, intimidation, physical exhaustion, or mental distress is entirely contrary to those founding principles. Each of the (inter)national organizations at Jacksonville State University, as well as the University Code of Student Conduct and state law forbid hazing in all student activities at the university.

### ARE GREEKS REALLY LIKE WHAT WE SEE IN TV SHOWS AND MOVIES?

Many people have the misconception that the image of Greek organizations depicted in Animal House is really what is happening on college campuses across America. In reality, the Animal House image of Greek Life could not be further from the truth. The Jacksonville State University fraternity and sorority community promotes responsibility in its activities. The Greek governing councils encourage responsibility in a number of ways. Through judicial boards, chapters, and governing councils, they hold accountable those members of the Greek system who do not act appropriately.

# GREEK GLOSSARY

### ACTIVE

A fully initiated member of a fraternity or sorority

### ALUMNUS/ALUMNA (SINGULAR)

an initiated man/woman who is no longer in college

### BID

a formal invitation to join a fraternity or sorority

### CHAPTER

the local collegiate group of a national fraternity or sorority

### COLONIZATION/RECOLONIZATION

the process of establishing a new national fraternity or sorority on campus

### FORMAL RECRUITMENT

the period set aside for membership recruitment of Interfraternity Council fraternities and Panhellenic Association sororities

### IFC (INTERFRATERNITY COUNCIL)

a local governing body that serves affiliated fraternities with the council.

### INITIATION

the formal ceremony that brings a new member to full fraternity or sorority membership

### INTAKE

the process that National Pan-Hellenic Council fraternities and sororities use to select new members

### LEGACY

a prospective new member whose relative is an alumnus/alumna or an active member of a particular fraternity or sorority

### NALFO (NATIONAL ASSOCIATION OF LATINO FRATERNAL ORGANIZATIONS, INC.)

an umbrella coalition established to promote and foster positive interfraternal relations, communication, and development of all Latino fraternal organizations through mutual respect, leadership, honesty, professionalism and education.

### NEW MEMBER

a member of a fraternity or sorority that has not yet been initiated

### NEW MEMBER EDUCATION PROGRAM

a time during which new members learn about the fraternity or sorority and its members

### NPC (NATIONAL PANHELLENIC COUNCIL)

Panhellenic sororities are social, Greek-letter societies of college women and alumnae that belong to an umbrella organization called the National Panhellenic Conference.

### NPHC (NATIONAL PAN-HELLENIC COUNCIL)

national coordinating body for the nine historically African American Fraternities and Sororities

### PHILANTHROPY

service project/charity undertaken by a sorority or fraternity on campus, community, or national level

### MGC (MULTICULTURAL GREEK COUNCIL)

an umbrella organization that serves as the programming body for culturally based Greek-lettered sororities and fraternities.

### POTENTIAL NEW MEMBER

a person who has interest in fraternity or sorority life and participates in the recruitment process

### PREFERENTIAL BIDDING

the system used to conclude the Formal Recruitment period, in which sororities indicate their choices for new members

### QUOTA

the specified number of new members each sorority can accept during Formal Recruitment



# GREEK ALPHABET

- |                              |                              |                               |
|------------------------------|------------------------------|-------------------------------|
| <b>A</b> Alpha (al-fah)      | <b>I</b> Iota (eye-o-tah)    | <b>P</b> Rho (row)            |
| <b>B</b> Beta (bay-tah)      | <b>K</b> Kappa (cap-ah)      | <b>Σ</b> Sigma (sig-mah)      |
| <b>Γ</b> Gamma (gam-ah)      | <b>Λ</b> Lambda (lamb-dah)   | <b>T</b> Tau (taw)            |
| <b>Δ</b> Delta (del-tah)     | <b>M</b> Mu (mew)            | <b>Υ</b> Upsilon (oop-si-lon) |
| <b>E</b> Epsilon (ep-si-lon) | <b>N</b> Nu (new)            | <b>Φ</b> Phi (fie)            |
| <b>Z</b> Zeta (zay-tah)      | <b>Ξ</b> Xi (zye)            | <b>X</b> Chi (kie)            |
| <b>H</b> Eta (ay-tah)        | <b>Ο</b> Omicron (om-e-cron) | <b>Ψ</b> Psi (sigh)           |
| <b>Θ</b> Theta (thay-tah)    | <b>Π</b> Pi (pie)            | <b>Ω</b> Omega (oh-may-gah)   |



## CONTACT US: FRATERNITY AND SORORITY LIFE

### ADDRESS

Dean of Students Office  
700 Pelham Road North  
402 TMB  
Jacksonville, AL 36265

### PHONE

(256) 782-5491

### WEBSITE

[greeks.jsu.edu](http://greeks.jsu.edu)



236-24 University Publications 5/24

JSU is an equal opportunity/affirmative action institution and does not discriminate based on age, religion, race, color, sex, veteran's status, national origin, or disability. Pursuant to Section 504 of the Rehabilitation Act of 1973 and Title II of the Americans with Disabilities Act of 1990, Jasmin Nunez, Title IX Coordinator, Suite 301-A Angle Hall, phone (256) 782-5769 is the coordinator for Section 504/ADA.

Jacksonville State University is accredited by the Southern Association of Colleges and Schools Commission on Colleges to award bachelor's, master's, educational specialist, and doctoral degrees. Contact the Commission on Colleges at 1866 Southern Lane, Decatur, Georgia 30033-4097 or call 404-679-4500 for questions about the accreditation of Jacksonville State University.